



Healthcare Products

---

# HIGH-TECH PRECISION ENGINEERING

---

**SHELVING  
SYSTEMS**

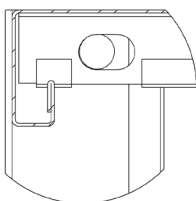




**Perforated Floor Type Shelving**



**Solid Floor Type Shelving**



**Sectional Safety Edge View of Shelf**

## Floor Type Shelving

The shelving system is of high quality achieved through the use of a fully automated panel bender machine, which also produces each shelf and post with a safety edge.

## Standard Features

- Safety edge construction on shelves and posts
- Modular - easy to assemble, expand and adjust
- Stainless steel angular posts for strength
- Mobile - suitable for many applications
- Durable - constructed and designed to the highest standards of strength and hygiene
- Includes nuts and bolts for assembly
- Can be fixed to floor
- Perforated shelves with staggered 8mm diameter holes, spaced 50mm apart
- 500mm or 380mm wide shelves

## Specifications

Mac-Care Model SMH Modular Shelving Code... (please specify) with solid or perforated (please specify), shelves manufactured from 0.9mm-thick grade 304 (18/10) stainless steel. Posts manufactured from 0.9mm gauge grade 304 stainless steel, bent at a 90-degree angle & complete with a safety edge. Inclusive of nuts and bolts for assembly. Manufactured by Mac Brothers Cape Town.

## Product Codes

Order Code	Model	Dimensions	Option
SMH0187	4 Tier Floor Type Shelf Assembly	900 x 500 x 1800mm	304SS Solid
SMH0188	4 Tier Floor Type Shelf Assembly	900 x 380 x 1800mm	304SS Solid
SMH0189	4 Tier Floor Type Shelf Assembly	1130 x 500 x 1800mm	304SS Solid
SMH0190	4 Tier Floor Type Shelf Assembly	1130 x 380 x 1800mm	304SS Solid
SMH0191	4 Tier Floor Type Shelf Assembly	900 x 500 x 1800mm	304 SS Perforated
SMH0192	4 Tier Floor Type Shelf Assembly	900 x 380 x 1800mm	304SS Perforated
SMH0193	4 Tier Floor Type Shelf Assembly	1130 x 500 x 1800mm	304SS Perforated
SMH0194	4 Tier Floor Type Shelf Assembly	1130 x 380 x 1800mm	304SS Perforated



**Slotted Shelving**

## Slot Fit Wall Type Shelving

### Standard Features

- Manufactured from grade 304 (18/10) stainless steel
- All shelves manufactured with safety edge
- Adjustable within wall-mounted slot
- 300 or 400mm deep shelves

### Specifications

#### Solid Shelves

Mac-Care Model SMHS Solid Slot Fitted Adjustable Shelving, dimensions... (please specify) shelves, with depth of... (please specify). All components manufactured from 1.2mm gauge grade 304 (18/10) stainless steel. One-piece shelf and integrated bracket with a 25mm apron to front and sides with 30mm turn up at back and safety edge on corners (quantity.....) Supplied with 2 x wall bands code... (please specify) fixed to wall. Manufactured by Mac Brothers Cape Town.

#### Perforated Shelves:

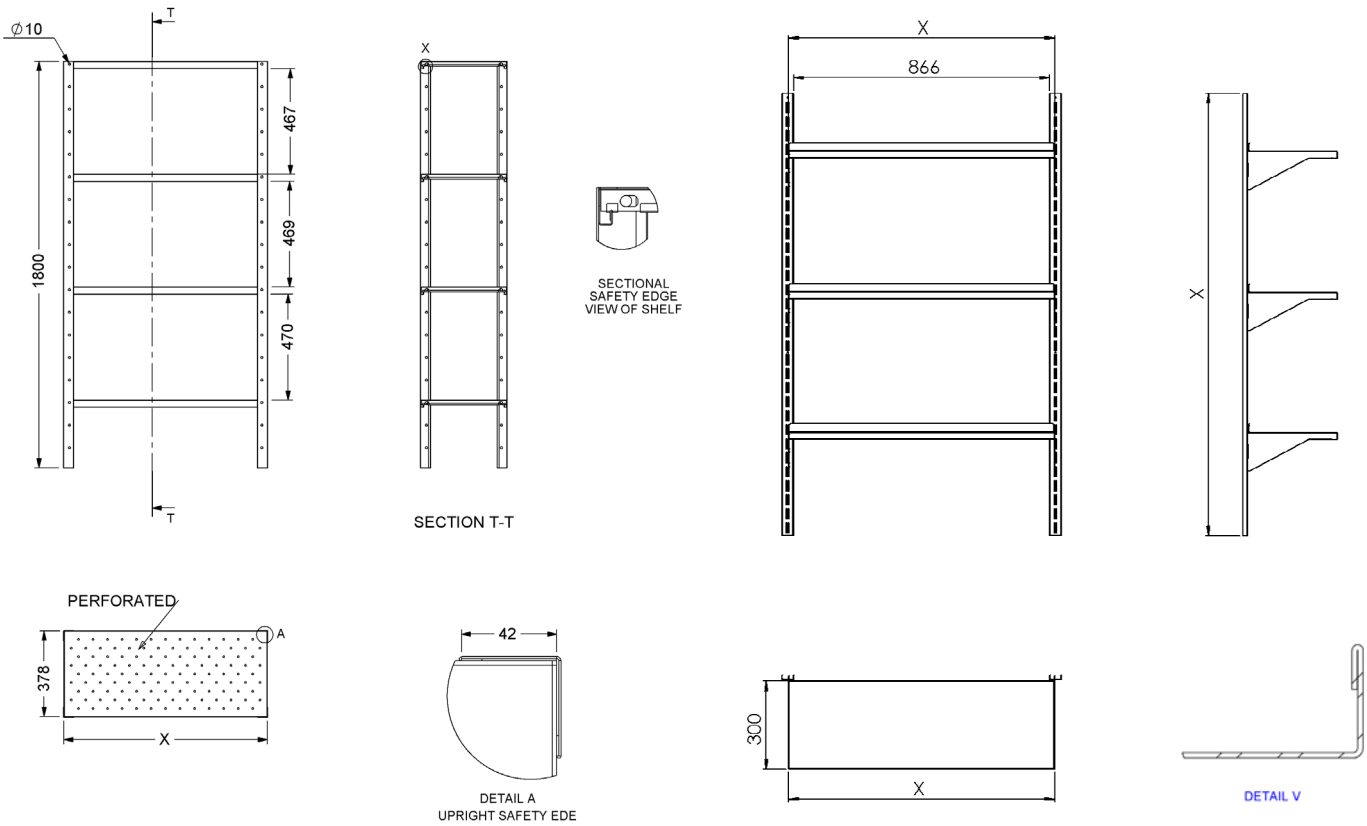
Mac-Care Model SMHP Perforated Slot Fitted Adjustable Shelving dimensions... (please specify) shelves, with depth of... (please specify). All components manufactured from 1.2mm gauge grade 304 (18/10) Stainless steel. One-piece shelf and integrated bracket with a 25mm apron to front and sides with 30mm turn up at back and safety edge on corners (quantity.....) Supplied with 2 x wall bands code.... (please specify) fixed to wall. Manufactured by Mac Brothers Cape Town.

### Product Codes

#### Perforated Shelves

Order Code	Description	Dimensions	Option
SMH0199	Slot Fitted Shelving	900 x 300mm	Perforated
SMH0200	Slot Fitted Shelving	900 x 400mm	Perforated
SMH0201	Slot Fitted Shelving	1200 x 300mm	Perforated
SMH0202	Slot Fitted Shelving	1200 x 400mm	Perforated
SMH0203	Slot Fitted Shelving Wall Band	1000mm	Wall band
SMH0204	Slot Fitted Shelving Wall Band	1500mm	Wall band
SMH0205	Slot Fitted Shelving Wall Band	1800mm	Wall band

## TECHNICAL DRAWINGS



### Product Codes Solid Shelves

Order Code	Description	Dimensions	Option
SMH0195	Slot Fitted Shelving	900x300 mm	Solid
SMH0196	Slot Fitted Shelving	900x400 mm	Solid
SMH0197	Slot Fitted Shelving	1200x300 mm	Solid
SMH0198	Slot Fitted Shelving	1200x400 mm	Solid
SMH0203	Slot Fitted Shelving Wall Band	1000 mm	Wall Band
SMH0204	Slot Fitted Shelving Wall Band	1500 mm	Wall Band
SMH0205	Slot Fitted Shelving Wall Band	1800 mm	Wall Band



CAPE TOWN • JOBURG • DURBAN • HARARE

CALL 0860 111 MAC  
[www.macbrothers.co.za](http://www.macbrothers.co.za)  
[info@macbrothers.co.za](mailto:info@macbrothers.co.za)

**DISCLAIMER** The information supplied in this brochure is based on the information believed to be reliable, however not binding and inaccuracies may occur. Mac Brothers (Pty) Ltd reserves the right to change specifications and design at any time without notice. Copyright by Mac Brothers (Pty) Ltd. All rights reserved under the Copyright Act of 1987 with the amendments. Reproduction of any of the content, partial or full, is only allowed upon prior written approval by Mac Brothers (Pty) Ltd, which shall not be unreasonably refused.